

TCC5 – Single lever mixer tap with swan neck

Care instructions for your tap

To maintain the appearance of this tap, ensure that it is regularly cleaned using only a clean, soft damp cloth. A solution of warm water and a mild liquid detergent may be used where necessary, and then rinsed thoroughly and wiped dry. Any other cleaning action will invalidate your warranty. If the tap has a diffuser it should be cleaned periodically.

Abrasive cleaners, scouring cleaners and acidic cleaners must not be used under any circumstances. Avoid contact with all solvents (including chlorinated solvents, ketones or acetones as these may result in surface deterioration or etching). Also avoid contact with any harsh household chemicals such as oven cleaners, drain cleaners, rust removers, paint strippers, toilet bowl cleaners, bar keepers friend or Brasso.

Important technical data

Operating pressure range: 0.7 – 6.5* bar

Maximum hot water temperature: 70°C, recommended temperature of 46°C

*** If these temperatures or pressures are exceeded, even for short periods, damage can result.**

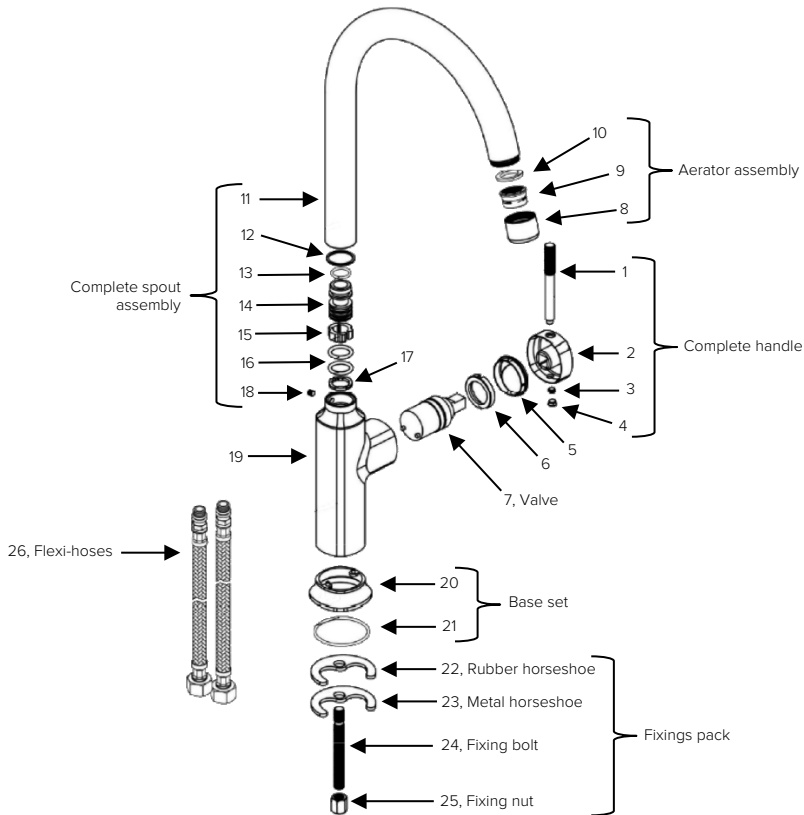
CDA taps are either WRAS approved or manufactured in accordance with recognised UK and European standards. Please ensure your kitchen tap is fitted in accordance with Local Water Byelaws. These installation guidelines have been prepared for your direction and you must exercise care at all times. We do not accept responsibility for problems that may occur through improper installation. Whilst assembling the tap, take care not to accidentally loosen any screwed assemblies.

Installation preparation

- Before installing the new mixer it is essential that you thoroughly flush through the supply pipes in order to remove any remaining solder, swarf or impurities from your system. Failure to carry out this simple procedure could cause problems or damage the workings of the tap. **Ensure that you remove these impurities from the sink below too. Failing to do so can damage the sink.**
- We strongly recommend installing particle filter strainers and isolation valves to both the hot and cold feed pipes in an accessible position. This will help to prevent premature failure of the valves and ease any future maintenance.
- **All parts should be removed from their packaging and inspected for any transport damage prior to installation.**
- Shut off your water heating system and ensure that your mains stopcock is closed. Open the lowest hot and cold taps in the house and allow the water to run until the cold-water storage tank and pipes are fully empty. Please note, the hot water storage cylinder (if applicable) will always remain full.
- This tap requires a 35mmØ tap hole. If replacing an existing tap, remove the tap & clean the end of the feed pipes using wire wool. The tap hole area should be free from dirt and sealant.
- Loosely position the tap and tail pipes to check if any alteration to the existing pipework is required. If this is the case, do this now.

Installation

1. Fit the flexi-hoses (parts 26) to the tap. We recommend using a small amount of PTFE tape to help keep a good seal.
2. Connect the fixing bolt (part 24) to the base of the tap.
3. Feed the flexi-hoses and fixing bolt through the worktop, taking care not to damage the tap assembly or worktop.
4. Feed the rubber horseshoe (part 22) and then the metal horseshoe (part 23) over the fixing bolt and secure the tap into position using the fixing nut (part 25)
5. Ensure the flexible hoses are tightened within the tap but **do not overtighten them** as this could damage the seals.
6. Connect the hot and cold tail pipes to the water mains using suitable fittings. Non-return valve water fixings can be used to satisfy local water regulations.



After installation

Once you have visually checked the new fittings and connections, ensure that all taps are closed except the new tap, which should be left open. Turn on the water supply at the mains stop cock. As the system starts to refill, **check carefully for leaks**. Once you are fully satisfied that there are no leaks, turn on the water heating.

Clean the tap to remove any marks created during installation.

E & O E. All instructions, dimensions and illustrations are provided for guidance only. CDA reserves the right to change specifications without prior notice.